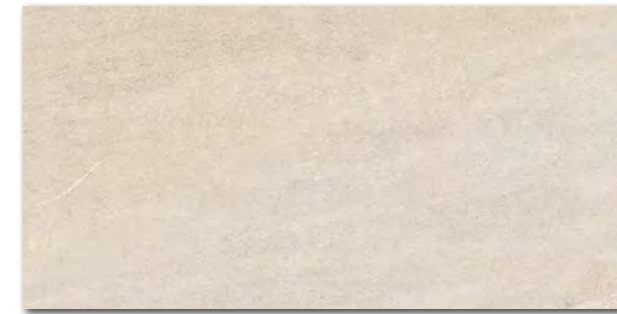


DAK81735
PEI 5 ○ 83 l m²
mat | matt



DAK81736
PEI 4 ○ 83 l m²
mat | matt



DAK84735
PEI 5 ○ 83 l m²
mat | matt
běžová | beige



DAK84736
PEI 4 ○ 83 l m²
mat | matt
hnědá | brown



80x80

R9

A

V3

R

40x80

R9

A

V3

R

Všechny výrobky celé série vykazují velké odchylky odstínové diference V3. | All products of the entire batch show big deviations in shade difference V3.

Před pokládkou doporučujeme jednotlivé obkladové prvky vybírat z několika kartonů a výslednou plochu komponovat podle inspirativní fotodokumentace z katalogů RAKO případně z webových stránek www.rako.cz. Žádoucí je kombinace všech jednotlivých designů obkladových prvků včetně jejich natáčení o 90° nebo 180° tak, aby bylo dosaženo vyváženého vzhledu obkládané plochy.

Before laying the tiles, we suggest you select from several cartons and arrange them as illustrated in the inspiration photo documentation in RAKO catalogues or website www.rako.eu, and mix the tiles to achieve the required result including turning them by 90° or 180°.

výrobek | product



EN



ks/m²



ks/m²



kg

kg/m²

brutto kg

výrobek product	cm	mm	EN	mm	ks/m ²	kg	ks/m ²	kg	kg/m ²	brutto kg	
dlaždice floor tile	80-80	798-798-10	EN 14411 - G Bla	2	1,6	1,28	42	53,76	28,0	21,9	1 202
dlaždice floor tile	40-80	398-798-10	EN 14411 - G Bla	4	3,1	1,28	42	53,76	28,0	21,9	1 202



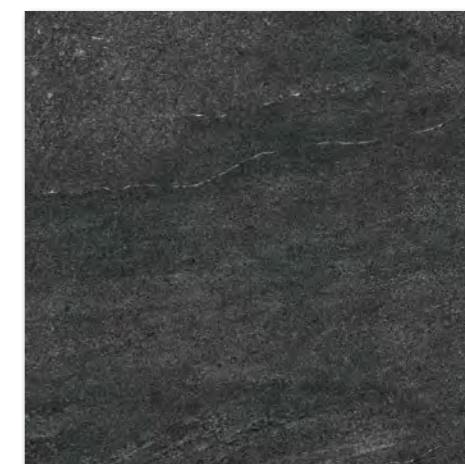
DAK81737
PEI 5 ○ 83 | m²
mat | matt



DAK81738
PEI 4 ○ 83 | m²
mat | matt



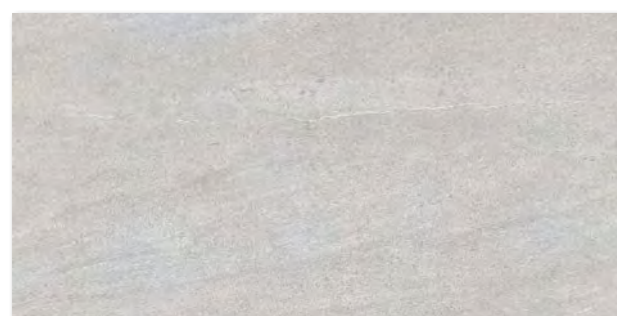
DAK81739
PEI 4 ○ 83 | m²
mat | matt | R9 | A



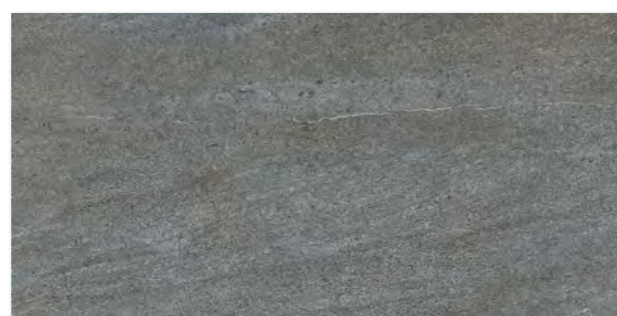
DAK63739
PEI 4 ○ 82 | m²
mat | matt | R9 | A



DAR63739
PEI 4 ○ 84 | m²
mat | matt | R10 | B



DAK84737
PEI 5 ○ 83 | m²
mat | matt
šedá | grey



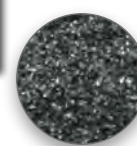
DAK84738
PEI 4 ○ 83 | m²
mat | matt
tmavě šedá | dark grey



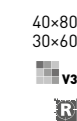
DAK84739
PEI 4 ○ 83 | m²
mat | matt | R9 | A
černá | black



DAKSE739
PEI 4 ○ 82 | m²
mat | matt | R9 | A



DARSE739
PEI 4 ○ 84 | m²
mat | matt | R10 | B



výrobek | product



výrobek product	cm	mm	EN		ks/m ²	kg/m ²	kg	kg	kg	kg	kg
dlaždice floor tile	80-80	798-798-10	EN 14411 - G Bla	2	1,6	1,28	42	53,76	28,0	21,9	1 202
dlaždice floor tile	40-80	398-798-10	EN 14411 - G Bla	4	3,1	1,28	42	53,76	28,0	21,9	1 202
dlaždice floor tile	60-60	598-598-10	EN 14411 - G Bla	3	2,8	1,08	32	34,56	23,7	21,9	782
dlaždice floor tile	30-60	298-598-10	EN 14411 - G Bla	6	5,6	1,08	40	43,20	23,7	21,9	971

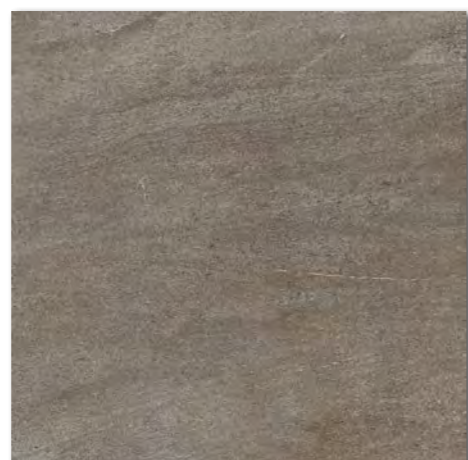


60x60
v3
R



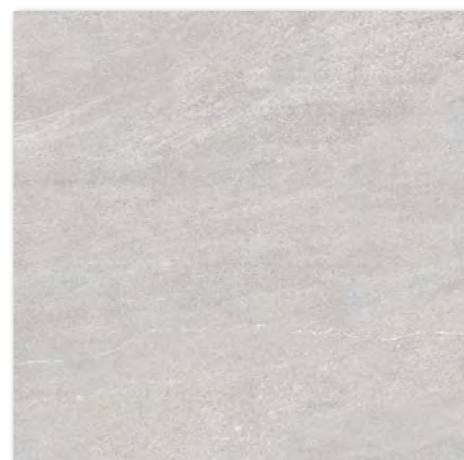
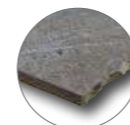
DAK63735
PEI 5 ○ 82 | m²
mat | matt | R9 | A

DAR63735
PEI 5 ○ 84 | m²
mat | matt | R10 | B



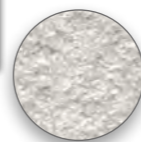
DAK63736
PEI 4 ○ 82 | m²
mat | matt | R9 | A

DAR63736
PEI 4 ○ 84 | m²
mat | matt | R10 | B



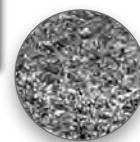
DAK63737
PEI 5 ○ 82 | m²
mat | matt | R9 | A

DAR63737
PEI 5 ○ 84 | m²
mat | matt | R10 | B



DAK63738
PEI 4 ○ 82 | m²
mat | matt | R9 | A

DAR63738
PEI 4 ○ 84 | m²
mat | matt | R10 | B



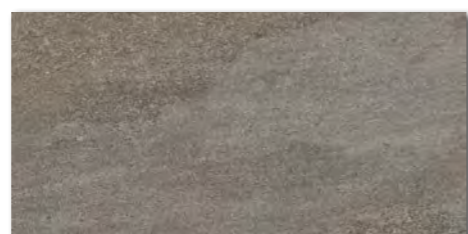
60x60
v3
R

30x60
v3
R



DAKSE735
PEI 5 ○ 82 | m²
mat | matt | R9 | A

DARSE735
PEI 5 ○ 84 | m²
mat | matt | R10 | B



DAKSE736
PEI 4 ○ 82 | m²
mat | matt | R9 | A

DARSE736
PEI 4 ○ 84 | m²
mat | matt | R10 | B

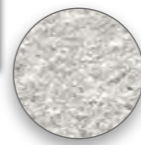


hnědá | brown



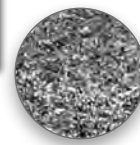
DAKSE737
PEI 5 ○ 82 | m²
mat | matt | R9 | A

DARSE737
PEI 5 ○ 84 | m²
mat | matt | R10 | B



DAKSE738
PEI 4 ○ 82 | m²
mat | matt | R9 | A

DARSE738
PEI 4 ○ 84 | m²
mat | matt | R10 | B



tmavě šedá | dark grey



30x60
R



DDTSE735
○ 78 | ks
mat | lesk | matt | glossy
běžová | beige



DDTSE737
○ 78 | ks
mat | lesk | matt | glossy
šedá | grey



30x60
R

výrobek | product



výrobek product	cm	mm	EN	mm	ks/m ²	mm ³	%	N/mm ²	kg/cm ²	kg	kg/m ²	kg
dlaždice floor tile	60x60	598x598x10	EN 14411 - G Bla	3	2,8	1,08	32	34,56	23,7	21,9	782	
dlaždice floor tile	30x60	298x598x10	EN 14411 - G Bla	6	5,6	1,08	40	43,20	23,7	21,9	971	
dekor decor	30x60	298x598x10	EN 14411 - G Bla	4	5,6	0,72	-	-	15,8	21,9	-	

Doporučené skladby formátů viz str. 500-501. | Recommended combinations of modular sizes see pages 500-501.



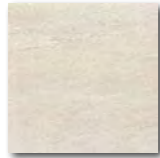
20x20
10x10
5x5 | 30x30

R10

B

V3

R



DAR26735
PEI 5 ○ 90 | m²
mat | matt

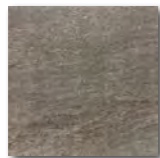
běžová | beige



DAR12735 [SET]
PEI 5 ○ 94 | m²
mat | matt | ☞



DDM06735 [SET]
PEI 5 ○ 72 | set
mat | matt | ☞

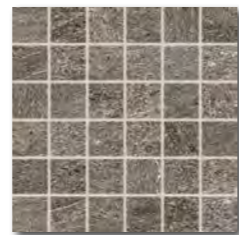


DAR26736
PEI 4 ○ 90 | m²
mat | matt

hnědá | brown



DAR12736 [SET]
PEI 4 ○ 94 | m²
mat | matt | ☞



DDM06736 [SET]
PEI 4 ○ 72 | set
mat | matt | ☞



DAR26737
PEI 5 ○ 90 | m²
mat | matt

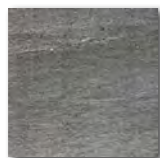
šedá | grey



DAR12737 [SET]
PEI 5 ○ 94 | m²
mat | matt | ☞



DDM06737 [SET]
PEI 5 ○ 72 | set
mat | matt | ☞

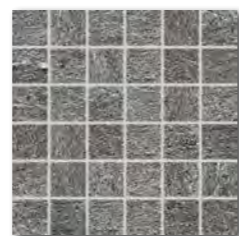


DAR26738
PEI 4 ○ 90 | m²
mat | matt

tmavě šedá | dark grey



DAR12738 [SET]
PEI 4 ○ 94 | m²
mat | matt | ☞

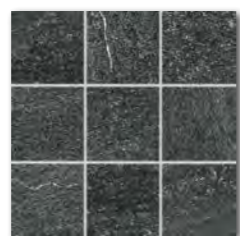


DDM06738 [SET]
PEI 4 ○ 72 | set
mat | matt | ☞

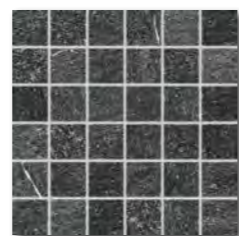


DAR26739
PEI 4 ○ 90 | m²
mat | matt

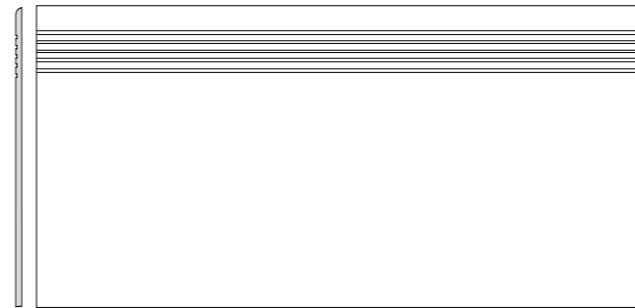
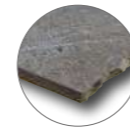
černá | black



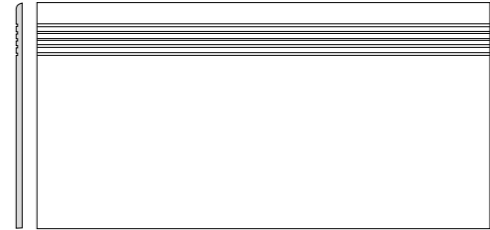
DAR12739 [SET]
PEI 4 ○ 94 | m²
mat | matt | ☞



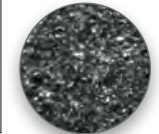
DDM06739 [SET]
PEI 4 ○ 72 | set
mat | matt | ☞



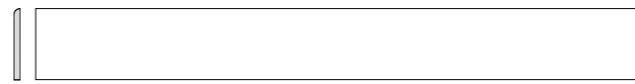
DCP84735 běžová | beige
DCP84736 hnědá | brown
DCP84737 šedá | grey
DCP84738 tmavě šedá | dark grey
DCP84739 černá | black
PEI 4-5 ○ 78 | ks
mat | matt | R9 | A



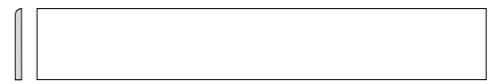
DCPSE735 běžová | beige
DCPSE736 hnědá | brown
DCPSE737 šedá | grey
DCPSE738 tmavě šedá | dark grey
DCPSE739 černá | black
PEI 4-5 ○ 72 | ks
mat | matt | R9 | A



DCVSE735
DCVSE736
DCVSE737
DCVSE738
DCVSE739
PEI 4-5 ○ 72 | ks
mat | matt | R10 | B

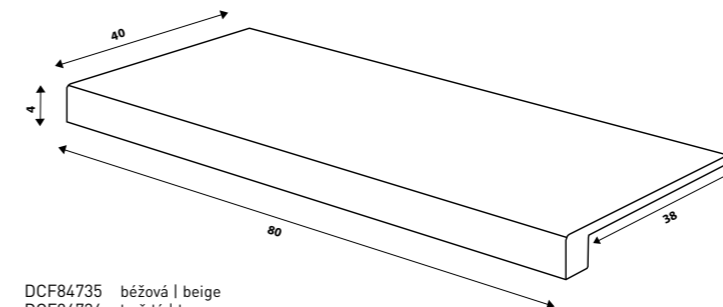


DSA89735 běžová | beige
DSA89736 hnědá | brown
DSA89737 šedá | grey
DSA89738 tmavě šedá | dark grey
DSA89739 černá | black
○ 72 | ks
mat | matt



DSAS4735 běžová | beige
DSAS4736 hnědá | brown
DSAS4737 šedá | grey
DSAS4738 tmavě šedá | dark grey
DSAS4739 černá | black
○ 56 | ks
mat | matt

80x9,5
60x9,5
R



DCF84735 běžová | beige
DCF84736 hnědá | brown
DCF84737 šedá | grey
DCF84738 tmavě šedá | dark grey
DCF84739 černá | black
PEI 4-5 ○ 108 | ks
mat | matt

40x80
R9
A
V2
R

RAKO Home

vyrobek product	cm	mm	EN	ks/m ²	kg/m ²	baratio kg
dlaždice floor tile	20x20	197x197x10	EN 14411 - G Bla	23	0,92	57
dlaždice floor tile	10x10	98x98x10	EN 14411 - G Bla	10	0,91	56
mozaika set 30x30 cm mosaic sheet 30x30 cm	5x5	48x48x10	EN 14411 - G Bla	3	0,27	-
schodovka step tile	40x80	398x798x10	STO E. 030 - 059824	2	3,1	0,64
schodovka step tile	30x60	298x598x10	STO E. 030 - 059824	6	5,6	1,08
sokl skirting plinth	80x9,5	798x95x10	STO E. 030 - 059824	10	13,2	0,76
sokl skirting plinth	60x9,5	598x95x10	STO E. 030 - 059824	13	17,5	0,74
schodová tvarovka special step tile	40x80	398x798x10	STO E. 030 - 059824	2	-	-