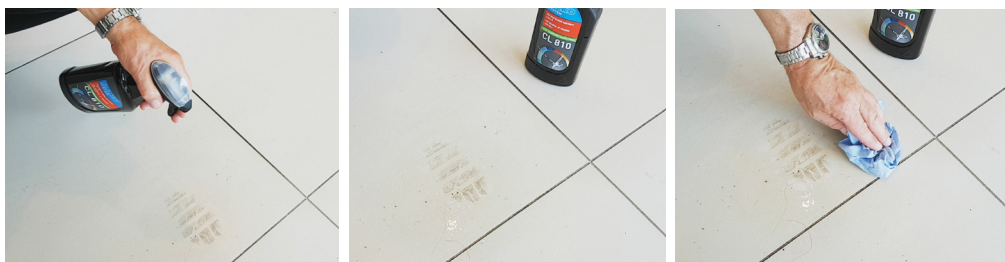


Periodical cleaning

Carry out or skip this step, as required according to the soiling level.

To remove stubborn tyre marks, footprints, etc., use **undiluted CL 810** locally. Let the agent act on the soiled area for 5-10 minutes, then wipe away with a cloth.



The following procedure is recommended to be carried out daily. The products are suitable for both manual wet mopping and floor-cleaning machines



Prepare the solution of **CL 803** at the concentration below using a measuring jug.

Use the solution of **CL 803** **four times a week**. Dilute to a ratio of 40–60 ml of agent to 10 l of lukewarm water.



Once a week use the solution of **CL 810** to remove any greasy soil. Dilute to a ratio of 40–60 ml of agent to 10 l of lukewarm water.

For heavily soiled flooring, replace **CL 810** with **CL 801**. Dilute to a ratio of 60–100 ml of agent to 10 l of lukewarm water.

General cleaning

To remove stubborn tyre marks, footprints, etc., use **undiluted CL 810** locally. Let the agent act on the soiled area for 5–10 minutes, then wipe away with a cloth.



Use a solution of **CL 801**. Dilute to a ratio of 200–400 ml to 10 l of lukewarm water.

Apply the solution to the whole floor surface using a mop. To release the soil, let the solution act for 10–15 minutes.



After the prescribed time, use a floor cleaner with white or red pad or a scrubber dryer with suction turned off.



Then remove the released soil with a vacuum cleaner or the scrubber dryer with suction on.



Finally, wash the whole floor surface with clean water or with a solution of **CL 803** diluted to a ratio of 20 ml to 10 l of lukewarm water.

Removal of tyre marks, footprints etc.

Cleaning with CL 810 can be carried out in addition to periodical or general cleaning. In such case, wash the treated surface with clean water at the end.

To remove stubborn tyre marks, footprints, etc., use undiluted **CL 810** locally. Let the agent act on the soiled area for 5–10 minutes, then wipe away with a cloth. Wash the treated surface with clean water at the end.



Prescribed RAKO SYSTEM cleaning agents



CL 801 (acidic cleaning agent)

- special cleaning agent intended to remove light and heavy soil from vitrified unglazed and glazed porcelain tiles
- for periodical and daily cleanup in industrial plants, residential homes, or office buildings



CL 803 (neutral cleaning agent)

- cleaning and polishing agent
- intended especially for surfaces prone to damage and matting
- contains very fine neutral detergents, which efficiently remove even resistant dirt



CL 810 (alkaline cleaning agent)

- heavy-duty cleaning agent for grease removal, 100% biodegradable
- intended for industrial cleaning of all water-resistant surfaces
- easily removes tyre marks from ceramic tiles