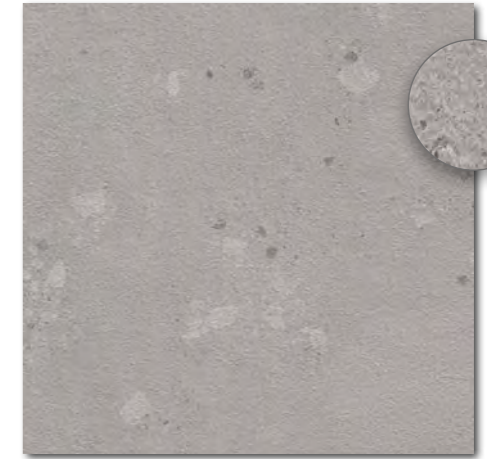


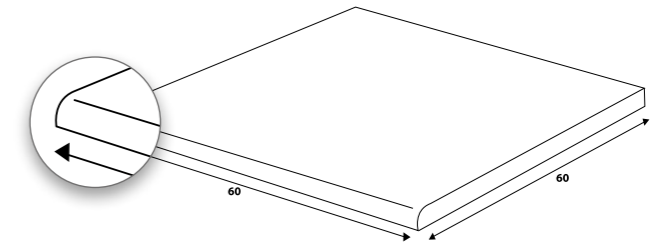
DAR66858  
PEI 5 ○ 890 l m<sup>2</sup>  
matt  
color **dune**  
beige | beige



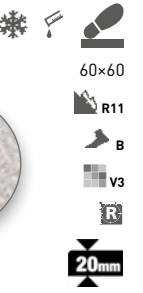
DAR66856  
PEI 5 ○ 890 l m<sup>2</sup>  
matt  
color **cement**  
grau | grey



DAR66857  
PEI 4 ○ 890 l m<sup>2</sup>  
matt  
color **ash**  
dunkelgrau | dark grey



DCH66856 color **cement** | grau | grey  
DCH66857 color **ash** | dunkelgrau | dark grey  
DCH66858 color **dune** | beige | beige  
PEI 4-5 ○ 880 l St  
matt



Produkt   product	mm	mm	EN	St/m <sup>2</sup>	St/m <sup>2</sup>	St/m <sup>2</sup>	St/m <sup>2</sup>	St/m <sup>2</sup>	St/m <sup>2</sup>	St/m <sup>2</sup>	St/m <sup>2</sup>
Bodenfliese   floor tile	60-60	598-598-20	EN 14411 - G Bla	2	2,8	0,72	30	21,60	32,0	44,4	985
Stufe   step tile	60-60	598-598-20	STO No. 030 - 059824	2	-	-	-	-	32,0	-	-