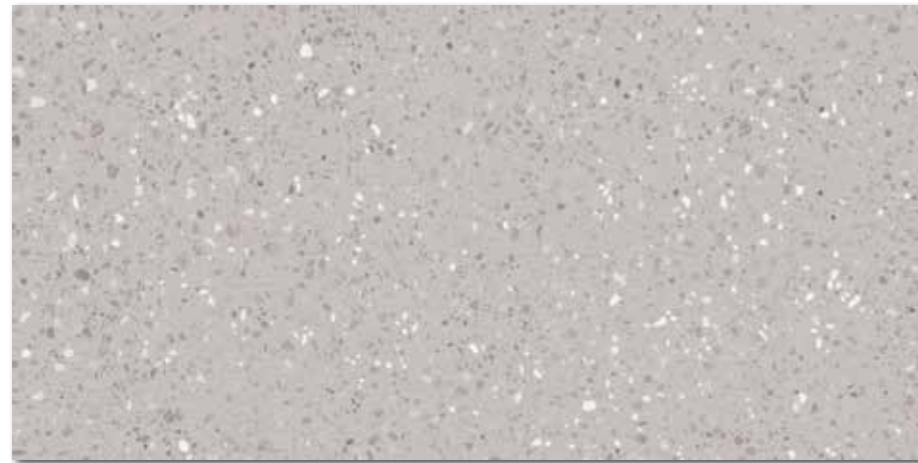


DASV1810
PEI 5 ○ 820 l m²
mattlglossy
weiß | white | blanc



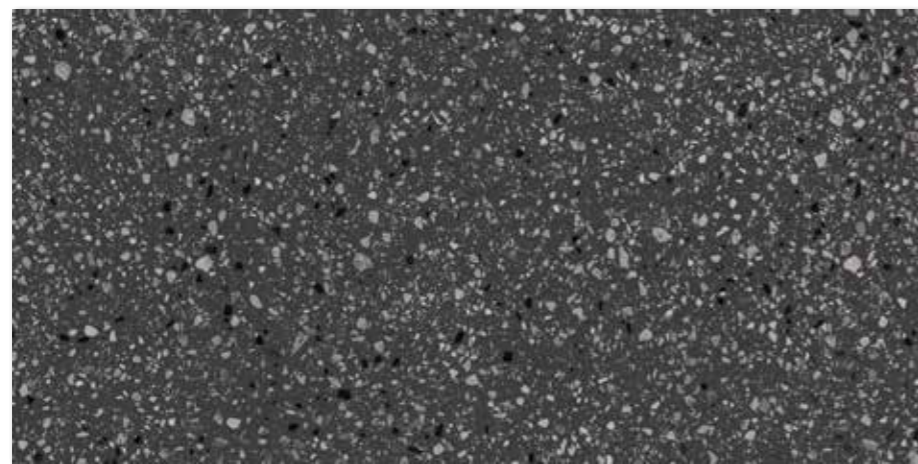
DASV1813
PEI 5 ○ 820 l m²
mattlglossy
beige | beige | beige



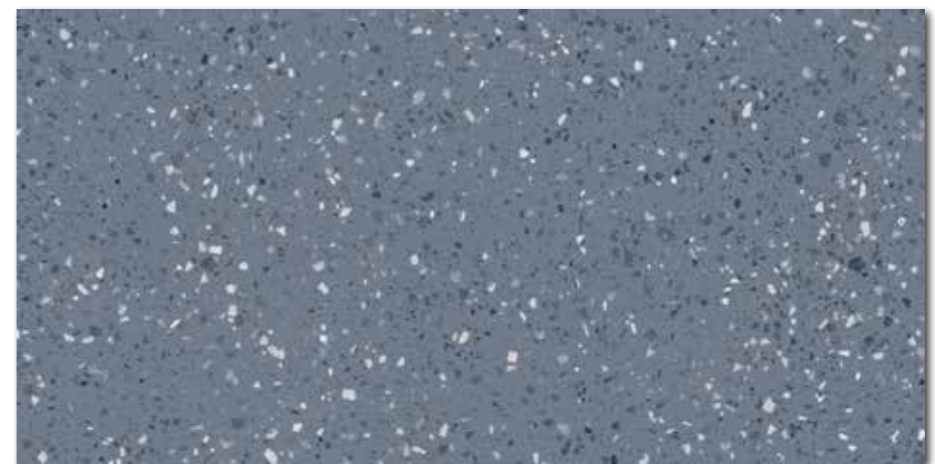
DASV1811
PEI 4 ○ 820 l m²
mattlglossy
grau | grey | gris



DASV1814
PEI 4 ○ 820 l m²
mattlglossy
ocker | ochre | ocre



DASV1812
PEI 4 ○ 820 l m²
mattlglossy
schwarz | black | noir



DASV1815
PEI 4 ○ 820 l m²
mattlglossy
blau | blue | bleu

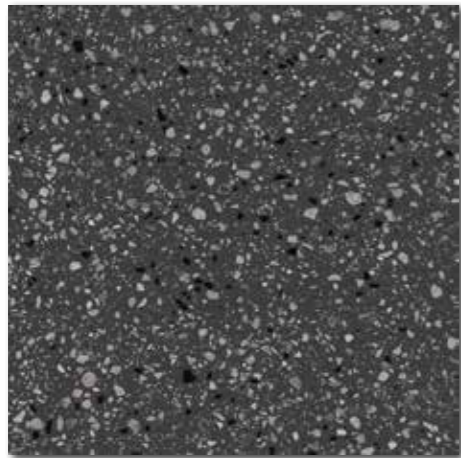
Produkt product						
Bodenfliese floor tile	60x120	598x1198x10	EN 14411:2016, annex G B1a GL	2	1,4	1,44
				27	38,88	32,7
					22,7	908



DAS63810
PEI 5 ○ 560 l m²
mattlglossy
weiß | white | blanc



DAS63811
PEI 4 ○ 560 l m²
mattlglossy
grau | grey | gris



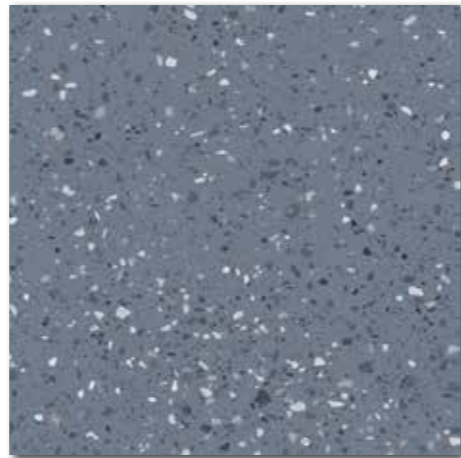
DAS63812
PEI 4 ○ 560 l m²
mattlglossy
schwarz | black | noir



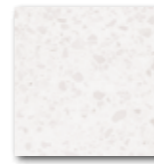
DAS63813
PEI 5 ○ 560 l m²
mattlglossy
beige | beige | beige



DAS63814
PEI 4 ○ 560 l m²
mattlglossy
ocker | ochre | ocre



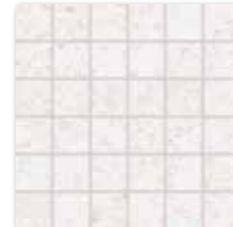
DAS63815
PEI 4 ○ 560 l m²
mattlglossy
blau | blue | bleu



DAS26810
PEI 5 ○ 780 l m²
mattlglossy
weiß | white | blanc



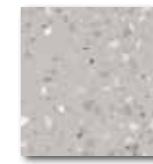
DAS26813
PEI 5 ○ 780 l m²
mattlglossy
beige | beige | beige



DDM06810 (SHEET)
PEI 5 ○ 430 | Netz
mattlglossy
weiß | white | blanc



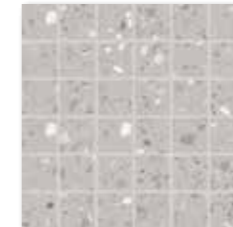
DDM06813 (SHEET)
PEI 5 ○ 430 | Netz
mattlglossy
beige | beige | beige



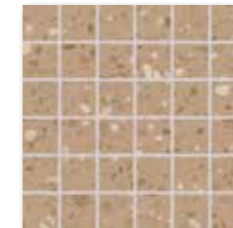
DAS26811
PEI 4 ○ 780 l m²
mattlglossy
grau | grey | gris



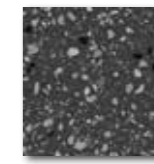
DAS26814
PEI 4 ○ 780 l m²
mattlglossy
ocker | ochre | ocre



DDM06811 (SHEET)
PEI 4 ○ 430 | Netz
mattlglossy
grau | grey | gris



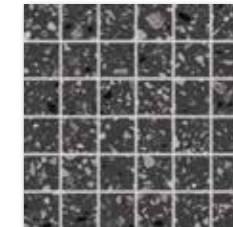
DDM06814 (SHEET)
PEI 4 ○ 430 | Netz
mattlglossy
ocker | ochre | ocre



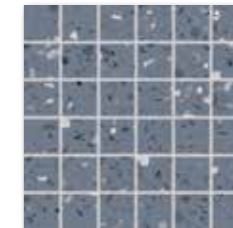
DAS26812
PEI 4 ○ 780 l m²
mattlglossy
schwarz | black | noir



DAS26815
PEI 4 ○ 780 l m²
mattlglossy
blau | blue | bleu



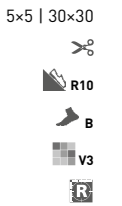
DDM06812 (SHEET)
PEI 4 ○ 430 | Netz
mattlglossy
schwarz | black | noir



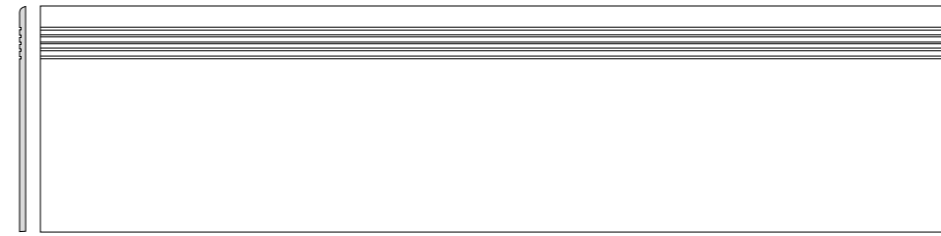
DDM06815 (SHEET)
PEI 4 ○ 430 | Netz
mattlglossy
blau | blue | bleu



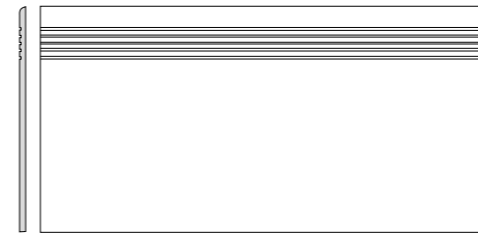
Produkt product	cm	mm	EN		ks/m ²	m ²		m ²	kg	kg/m ²	brutto kg
Bodentiese floor tile	60×60	598×598×10	EN 14411:2016, annex G Bla GL	3	2,8	1,08	32	34,56	23,7	21,9	782
Bodentiese floor tile	20×20	198×198×10	EN 14411:2016, annex G Bla GL	23	25	0,92	57	52,44	20,1	21,9	1.174
Mosaik sheet 30×30 cm mosaic sheet 30×30 cm	5×5	48×48×10	EN 14411:2016, annex G Bla GL	3	11	0,27	-	-	5,9	21,9	-



5×5 | 30×30



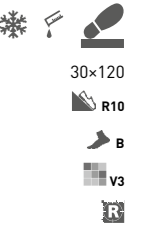
DCPVF810* weiß | white | blanc
 DCPVF811* grau | grey | gris
 DCPVF812* schwarz | black | noir
 DCPVF813* beige | beige | beige
 PEI 4-5 ○ 810 | St
 mattglossy



DCPSE810 weiß | white | blanc
 DCPSE811 grau | grey | gris
 DCPSE812 schwarz | black | noir
 DCPSE813 beige | beige | beige
 PEI 4-5 ○ 370 | St
 mattglossy



DSAS4810 weiß | white | blanc
 DSAS4811 grau | grey | gris
 DSAS4812 schwarz | black | noir
 DSAS4813 beige | beige | beige
 ○ 240 | St
 mattglossy



30x120

R10

B

V3

R

30x60

R10

B

V3

R

60x9,5

R

Die Fliesen der Serie zeichnen sich durch ein breites Farbspiel (V3) aus. | All products of the entire batch show big deviations in shade difference V3.

Wir empfehlen, einzelne Fliesen aus mehreren Paketen herauszunehmen und den gesamten Bodenbelag nach der Inspirationsfotodokumentation in den Katalogen RAKO, eventuell den Webseiten www.rako.cz, zu komponieren. Wünschenswert ist die Kombination aller Fliesendesigns einschließlich ihrer Drehung um 90° oder 180°, sodass ausgewogene Optik der verlegten Fläche erzielt wird.

Before laying the tiles, we suggest you select from several cartons and arrange them as illustrated in the inspiration photo documentation in RAKO catalogues or website www.rako.eu, and mix the tiles to achieve the required result including turning them by 90° or 180°.

Avant de commencer la pose, il est conseillé de déballer plusieurs cartons de carreaux et de calpiner votre surface finale en vous inspirant de la documentation photographique des catalogues RAKO ou éventuellement par celle du site internet www.rako.eu. Pour obtenir un aspect visuel optimal de votre mur ou de votre sol, nous vous recommandons de combiner les différents carreaux, notamment en les tournant de 90° et 180°.

Produkt product	mm	mm	EN	ks/m ²	m ²	kg	kg/m ²	brutto kg	
Stufe step tile	30x120	298x1198x10	STO No. 030 - 049916	5	2,8	1,80	-	40,9	22,7
Stufe step tile	30x60	298x598x10	STO No. 030 - 049916	6	5,6	1,08	40	23,7	21,9
Sockel skirting plinth	60x9,5	598x95x10	STO No. 030 - 049916	13	17,5	0,74	-	16,2	21,9

* Produktion auf Anfrage. | Production by order. | Production par accord.