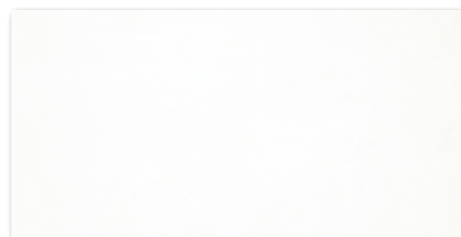


WADV4719  
 ○ 76 l m<sup>2</sup>  
 mat | matt



WLAS4719  
 ○ 68 l ks  
 mat | matt  
 60x9,5  
 bíloběžová | white-beige



WADV4722  
 ○ 76 l m<sup>2</sup>  
 mat | matt



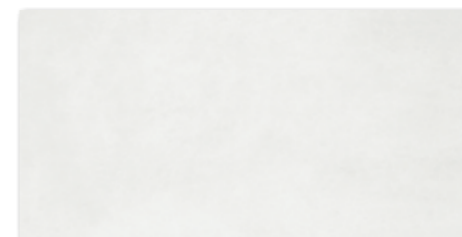
WLAS4722  
 ○ 68 l ks  
 mat | matt  
 60x9,5  
 bílošedá | white-grey



WADV4720  
 ○ 76 l m<sup>2</sup>  
 mat | matt



WARV4720  
 ○ 84 l m<sup>2</sup>  
 mat | matt  
 slonová kost | ivory



WADV4723  
 ○ 76 l m<sup>2</sup>  
 mat | matt



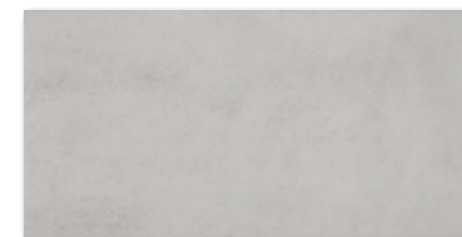
WARV4723  
 ○ 84 l m<sup>2</sup>  
 mat | matt  
 světle šedá | light grey



WADV4721  
 ○ 76 l m<sup>2</sup>  
 mat | matt  
 hnědošedá | brown-grey



WLASN100  
 ○ 60 l ks  
 matlesk | mattglossy  
 60x2,3  
 měděná | cupreous



WADV4724  
 ○ 76 l m<sup>2</sup>  
 mat | matt



WLASN101  
 ○ 60 l ks  
 matlesk | mattglossy  
 60x2,3  
 platinová | platinum

30x60  
 v2

30x60  
 v2

RAKO Home

výrobek | product



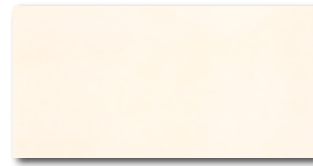
výrobek   product	30x60	60x23	60x9,5	EN	ks/m <sup>2</sup>	m <sup>2</sup> /ks	kg/m <sup>2</sup>	brutto kg		
obkládačka   wall tile	30x60	298x598x10	EN 14411 - L BIII	6	5,56	1,08	43,20	20,0	18,5	825
listela   listel	60x2,3	598x23x10	EN 14411 - L BIII	6	72,5	0,08	-	1,7	20,6	-
listela   listel	60x9,5	598x95x10	EN 14411 - L BIII	6	17,5	0,34	-	6,7	18,7	-



20x40



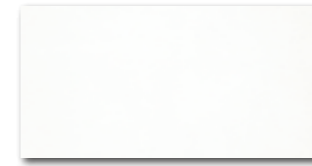
WADMB719  
 ○ 68 l m<sup>2</sup>  
 mat | matt | **V2**  
 bíloběžová | white-beige



WADMB720  
 ○ 68 l m<sup>2</sup>  
 mat | matt | **V2**



WADMB721  
 ○ 68 l m<sup>2</sup>  
 mat | matt | **V2**



WADMB722  
 ○ 68 l m<sup>2</sup>  
 mat | matt | **V2**

bílošedá | white-grey



WADMB723  
 ○ 68 l m<sup>2</sup>  
 mat | matt | **V2**



WADMB724  
 ○ 68 l m<sup>2</sup>  
 mat | matt | **V2**



20x40



WADMB220\*  
 ○ 76 l m<sup>2</sup>  
 mat | matt | **V4**  
 slonová kost | ivory



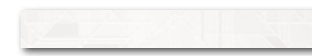
WADMB223\*  
 ○ 76 l m<sup>2</sup>  
 mat | matt | **V4**  
 světle šedá | light grey



40x4,8

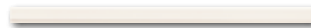


WLAMH719  
 ○ 52 l ks  
 matlesk | mattglossy



WLAMH722  
 ○ 52 l ks  
 matlesk | mattglossy

40x2



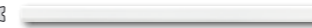
WLRMG719  
 ○ 54 l ks  
 mat | matt



WLRMG720  
 ○ 54 l ks  
 mat | matt



WLRMG721  
 ○ 54 l ks  
 mat | matt



WLRMG722  
 ○ 54 l ks  
 mat | matt

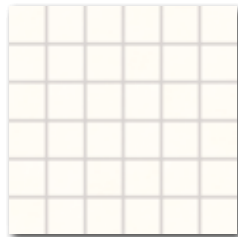
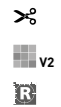


WLRMG723  
 ○ 54 l ks  
 mat | matt

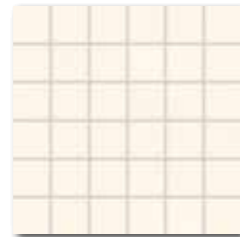


WLRMG724  
 ○ 54 l ks  
 mat | matt

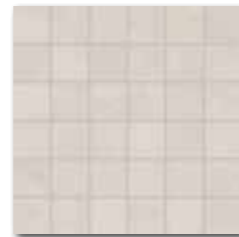
5x5 | 30x30



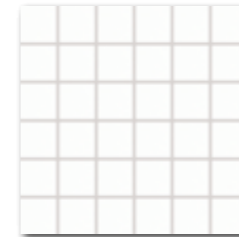
WDM05719 (SET)  
 ○ 66 l set  
 mat | matt  
 bíloběžová | white-beige



WDM05720 (SET)  
 ○ 66 l set  
 mat | matt  
 slonová kost | ivory



WDM05721 (SET)  
 ○ 66 l set  
 mat | matt  
 hnědošedá | brown-grey



WDM05722 (SET)  
 ○ 66 l set  
 mat | matt  
 bílošedá | white-grey



WDM05723 (SET)  
 ○ 66 l set  
 mat | matt  
 světle šedá | light grey



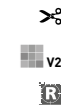
WDM05724 (SET)  
 ○ 66 l set  
 mat | matt  
 tmavě šedá | dark grey

40x4,8

RAKO Home

40x2

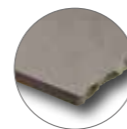
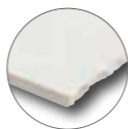
5x5 | 30x30



výrobek   product	cm	mm	EN	ks/m <sup>2</sup>	m <sup>2</sup>	kg	brutto kg
obkladáčka   wall tile	20x40	198x398x7	EN 14411 - L BIII	20	12,5	1,60	48
listela   listel	40x4,8	398x48x7	EN 14411 - L BIII	7	52,1	0,13	-
reliéfní listela   relief listel	40x2	398x20	STO č. 030 - 060753	12	125	0,09	-
mozaika set 30x30 cm   mosaic sheet 30x30 cm	5x5	48x48x7	STO č. 030 - 059826	3	11	0,27	-
							76,80
							20,6
							12,9
							1,8
							13,6
							1,7
							18,9
							3,5
							12,9
							1 016

\*Balení výrobku obsahuje nahodilý mix zobrazených designů. | The products are deliberately mixed in packing to include a random selection of designs.

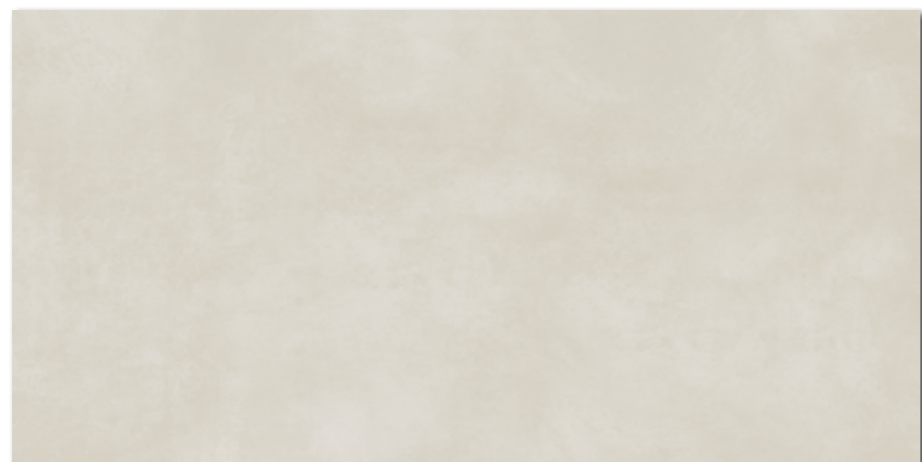




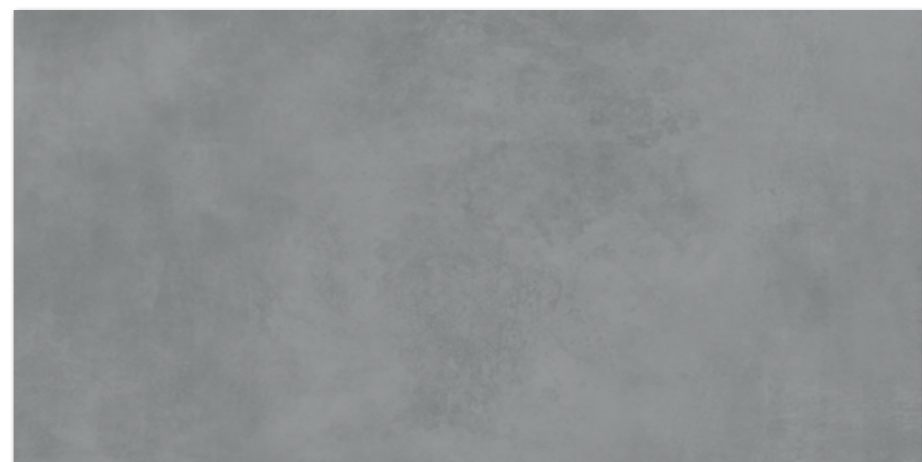
DARV1722  
PEI 5  $\odot$  93 | m<sup>2</sup>  
mat | matt  
bílá | white



DARV1723  
PEI 4  $\odot$  93 | m<sup>2</sup>  
mat | matt  
světle šedá | light grey



DARV1720  
PEI 5  $\odot$  93 | m<sup>2</sup>  
mat | matt  
slonová kost | ivory



DARV1724  
PEI 4  $\odot$  93 | m<sup>2</sup>  
mat | matt  
tmavě šedá | dark grey



DARV1721  
PEI 4  $\odot$  93 | m<sup>2</sup>  
mat | matt  
hnědošedá | brown-grey



DARV1725  
PEI 4  $\odot$  93 | m<sup>2</sup>  
mat | matt  
černá | black

výrobek | product



dlaždice | floor tile

60×120

598×1198×10

EN 14411 - G B Ia

2

1,4

1,44

27

38,88

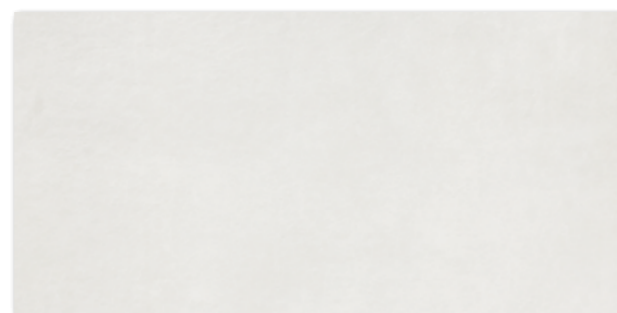
32,7

22,7

908



DAR81722  
PEI 5  $\odot$  89 | m<sup>2</sup>  
mat | matt



DAR84722  
PEI 5  $\odot$  89 | m<sup>2</sup>  
mat | matt  
bílá | white



DAR81720  
PEI 5  $\odot$  89 | m<sup>2</sup>  
mat | matt



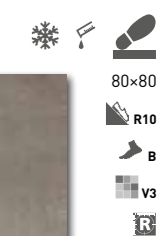
DAR84720  
PEI 5  $\odot$  89 | m<sup>2</sup>  
mat | matt  
slonová kost | ivory



DAR81721  
PEI 4  $\odot$  89 | m<sup>2</sup>  
mat | matt



DAR84721  
PEI 4  $\odot$  89 | m<sup>2</sup>  
mat | matt  
hnědošedá | brown-grey



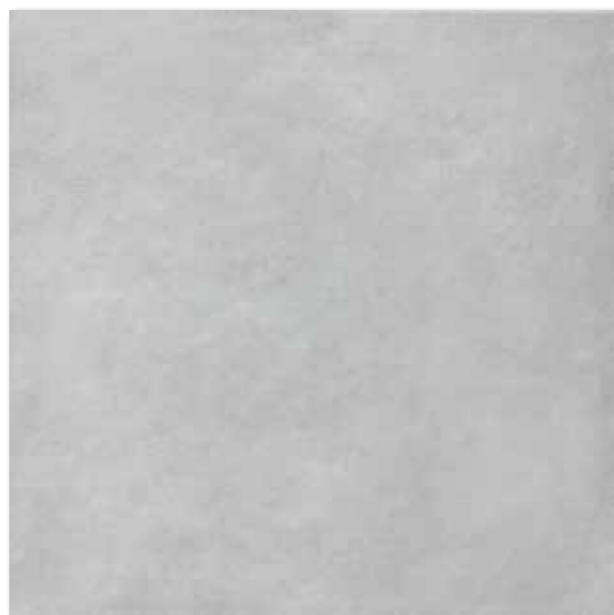
80x80  
R10  
B  
V3  
R

40x80  
R10  
B  
V3  
R

výrobek | product



	80x80	798x798x10	EN 14411 - G Bla	2	1,6	1,28	42	53,76	28,0	21,9	1 202
dlaždice   floor tile	80x80	798x798x10	EN 14411 - G Bla	2	1,6	1,28	42	53,76	28,0	21,9	1 202
dlaždice   floor tile	40x80	398x798x10	EN 14411 - G Bla	4	3,1	1,28	42	53,76	28,0	21,9	1 202



DAR81723  
PEI 4 ○ 89 | m<sup>2</sup>  
mat | matt



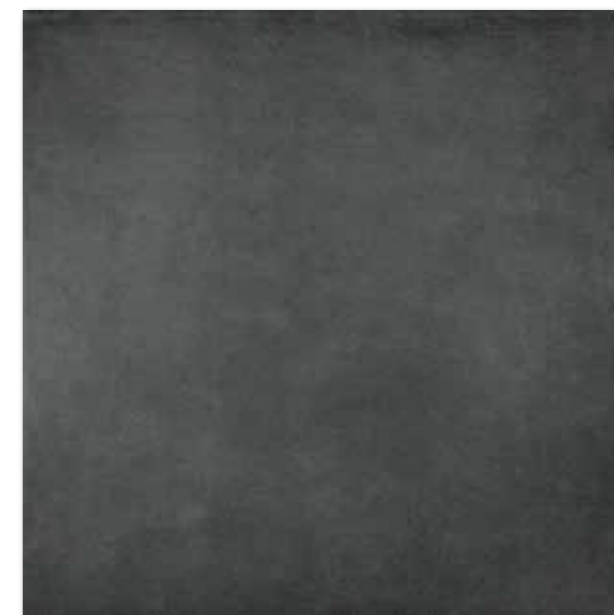
DAR84723  
PEI 4 ○ 89 | m<sup>2</sup>  
mat | matt  
světle šedá | light grey



DAR81724  
PEI 4 ○ 89 | m<sup>2</sup>  
mat | matt



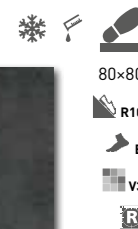
DAR84724  
PEI 4 ○ 89 | m<sup>2</sup>  
mat | matt  
tmavě šedá | dark grey



DAR81725  
PEI 4 ○ 89 | m<sup>2</sup>  
mat | matt



DAR84725  
PEI 4 ○ 89 | m<sup>2</sup>  
mat | matt  
černá | black



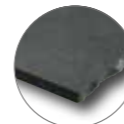
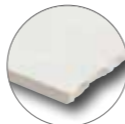
výrobek | product



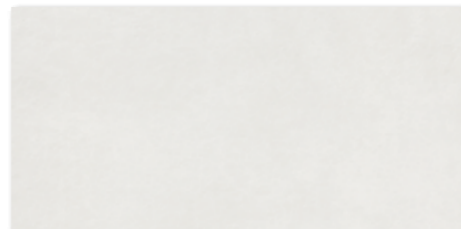
výrobek   product	cm	mm	EN	mm	ks/m <sup>2</sup>	m <sup>2</sup>	kg	kg/m <sup>2</sup>	brutto kg		
dlaždice   floor tile	80×80	798×798×10	EN 14411 - G Bla	2	1,6	1,28	42	53,76	28,0	21,9	1 202
dlaždice   floor tile	40×80	398×798×10	EN 14411 - G Bla	4	3,1	1,28	42	53,76	28,0	21,9	1 202

Doporučené skladby formátů viz str. 450. | Recommended combinations of modular sizes see page 450.





DAR63722  
PEI 5 ○ 82 | m<sup>2</sup>  
mat | matt



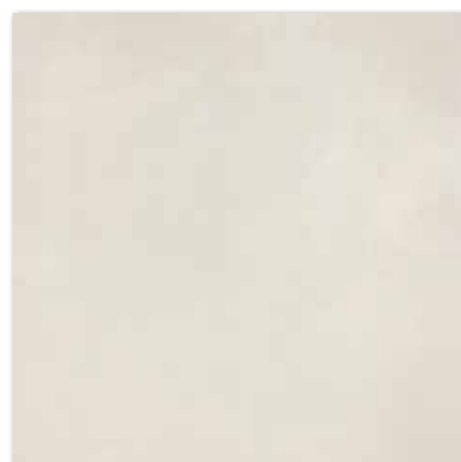
DARSE722  
PEI 5 ○ 82 | m<sup>2</sup>  
mat | matt  
bílá | white



DAR63723  
PEI 4 ○ 82 | m<sup>2</sup>  
mat | matt



DARSE723  
PEI 4 ○ 82 | m<sup>2</sup>  
mat | matt  
světle šedá | light grey



DAR63720  
PEI 5 ○ 82 | m<sup>2</sup>  
mat | matt



DARSE720  
PEI 5 ○ 82 | m<sup>2</sup>  
mat | matt  
slonová kost | ivory



DAR63724  
PEI 4 ○ 82 | m<sup>2</sup>  
mat | matt



DARSE724  
PEI 4 ○ 82 | m<sup>2</sup>  
mat | matt  
tmavě šedá | dark grey



DAR63721  
PEI 4 ○ 82 | m<sup>2</sup>  
mat | matt



DARSE721  
PEI 4 ○ 82 | m<sup>2</sup>  
mat | matt  
hnědošedá | brown-grey



DAR63725  
PEI 4 ○ 82 | m<sup>2</sup>  
mat | matt



DARSE725  
PEI 4 ○ 82 | m<sup>2</sup>  
mat | matt  
černá | black



60×60

R10

B

V3

R

30×60

R10

B

V3

R

60×60

R10

B

V3

R

RAKO Home

30×60

R10

B

V3

R

výrobek | product



EN



dlaždice | floor tile  
dlaždice | floor tile

60×60  
30×60

598×598×10  
298×598×10

EN 14411 - G Bla  
EN 14411 - G Bla

3  
6

2,8  
5,6

1,08  
1,08

32  
40

34,56  
43,20

23,7  
23,7

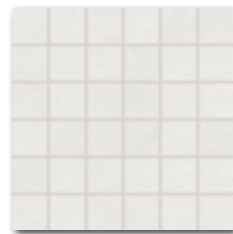
21,9  
21,9

782  
971

Doporučené skladby formátů viz str. 450. | Recommended combinations of modular sizes see page 450.



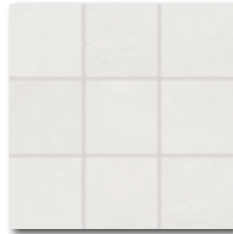
5x5 | 30x30  
10x10  
20x20  
30x30  
45x45



DDM06722 (SET)

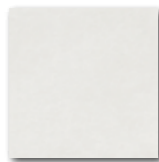
PEI 5  $\varnothing$  72 | set  
mat | matt |  $\text{R10}$  |  $\text{B}$  |  $\text{V3}$

bílá | white



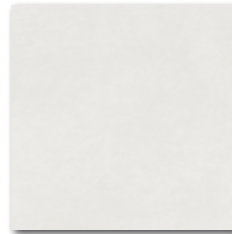
DAR12722 (SET)

PEI 5  $\varnothing$  94 | m<sup>2</sup>  
mat | matt |  $\text{R10}$  |  $\text{B}$  |  $\text{V3}$



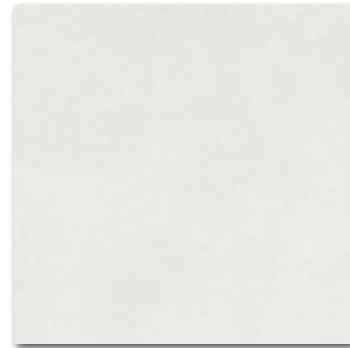
DAR26722

PEI 5  $\varnothing$  90 | m<sup>2</sup>  
mat | matt |  $\text{R10}$  |  $\text{B}$  |  $\text{V3}$



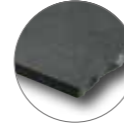
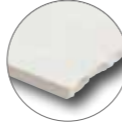
DAR34722

PEI 5  $\varnothing$  74 | m<sup>2</sup>  
mat | matt |  $\text{R10}$  |  $\text{B}$  |  $\text{V3}$

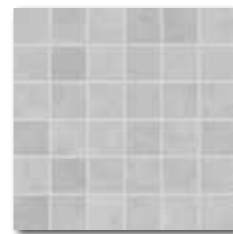


DAR4H722

PEI 5  $\varnothing$  76 | m<sup>2</sup>  
mat | matt |  $\text{R10}$  |  $\text{B}$  |  $\text{V3}$



5x5 | 30x30  
10x10  
20x20  
30x30  
45x45



DDM06723 (SET)

PEI 4  $\varnothing$  72 | set  
mat | matt |  $\text{R10}$  |  $\text{B}$  |  $\text{V3}$

světle šedá | light grey



DAR12723 (SET)

PEI 4  $\varnothing$  94 | m<sup>2</sup>  
mat | matt |  $\text{R10}$  |  $\text{B}$  |  $\text{V3}$



DAR26723

PEI 4  $\varnothing$  90 | m<sup>2</sup>  
mat | matt |  $\text{R10}$  |  $\text{B}$  |  $\text{V3}$



DAR34723

PEI 4  $\varnothing$  74 | m<sup>2</sup>  
mat | matt |  $\text{R10}$  |  $\text{B}$  |  $\text{V3}$



DAR4H723

PEI 4  $\varnothing$  76 | m<sup>2</sup>  
mat | matt |  $\text{R10}$  |  $\text{B}$  |  $\text{V3}$



DDM06720 (SET)

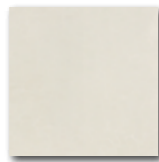
PEI 5  $\varnothing$  72 | set  
mat | matt |  $\text{R10}$  |  $\text{B}$  |  $\text{V3}$

slonová kost | ivory



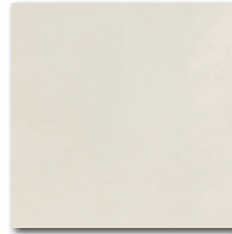
DAR12720 (SET)

PEI 5  $\varnothing$  94 | m<sup>2</sup>  
mat | matt |  $\text{R10}$  |  $\text{B}$  |  $\text{V3}$



DAR26720

PEI 5  $\varnothing$  90 | m<sup>2</sup>  
mat | matt |  $\text{R10}$  |  $\text{B}$  |  $\text{V3}$



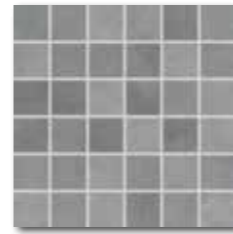
DAR34720

PEI 5  $\varnothing$  74 | m<sup>2</sup>  
mat | matt |  $\text{R10}$  |  $\text{B}$  |  $\text{V3}$



DAR4H720

PEI 5  $\varnothing$  76 | m<sup>2</sup>  
mat | matt |  $\text{R10}$  |  $\text{B}$  |  $\text{V3}$



DDM06724 (SET)

PEI 4  $\varnothing$  72 | set  
mat | matt |  $\text{R10}$  |  $\text{B}$  |  $\text{V3}$

tmavě šedá | dark grey



DAR12724 (SET)

PEI 4  $\varnothing$  94 | m<sup>2</sup>  
mat | matt |  $\text{R10}$  |  $\text{B}$  |  $\text{V3}$



DAR26724

PEI 4  $\varnothing$  90 | m<sup>2</sup>  
mat | matt |  $\text{R10}$  |  $\text{B}$  |  $\text{V3}$



DAR34724

PEI 4  $\varnothing$  74 | m<sup>2</sup>  
mat | matt |  $\text{R10}$  |  $\text{B}$  |  $\text{V3}$



DAR4H724

PEI 4  $\varnothing$  76 | m<sup>2</sup>  
mat | matt |  $\text{R10}$  |  $\text{B}$  |  $\text{V3}$



DDM06721 (SET)

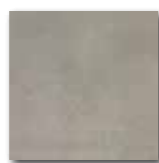
PEI 4  $\varnothing$  72 | set  
mat | matt |  $\text{R10}$  |  $\text{B}$  |  $\text{V3}$

hnědošedá | brown-grey



DAR12721 (SET)

PEI 4  $\varnothing$  94 | m<sup>2</sup>  
mat | matt |  $\text{R10}$  |  $\text{B}$  |  $\text{V3}$



DAR26721

PEI 4  $\varnothing$  90 | m<sup>2</sup>  
mat | matt |  $\text{R10}$  |  $\text{B}$  |  $\text{V3}$



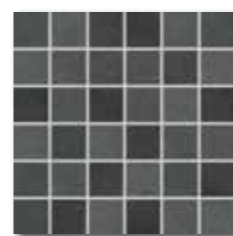
DAR34721

PEI 4  $\varnothing$  74 | m<sup>2</sup>  
mat | matt |  $\text{R10}$  |  $\text{B}$  |  $\text{V3}$



DAR4H721

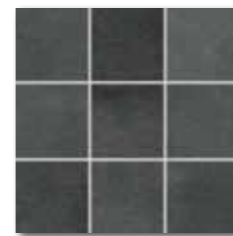
PEI 4  $\varnothing$  76 | m<sup>2</sup>  
mat | matt |  $\text{R10}$  |  $\text{B}$  |  $\text{V3}$



DDM06725 (SET)

PEI 4  $\varnothing$  72 | set  
mat | matt |  $\text{R10}$  |  $\text{B}$  |  $\text{V3}$

černá | black



DAR12725 (SET)

PEI 4  $\varnothing$  94 | m<sup>2</sup>  
mat | matt |  $\text{R10}$  |  $\text{B}$  |  $\text{V3}$



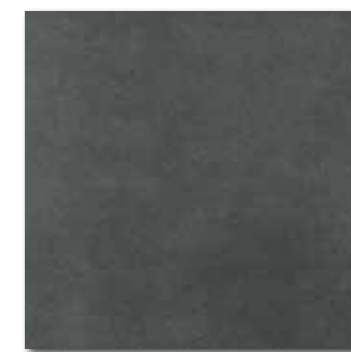
DAR26725

PEI 4  $\varnothing$  90 | m<sup>2</sup>  
mat | matt |  $\text{R10}$  |  $\text{B}$  |  $\text{V3}$



DAR34725

PEI 4  $\varnothing$  74 | m<sup>2</sup>  
mat | matt |  $\text{R10}$  |  $\text{B}$  |  $\text{V3}$



DAR4H725

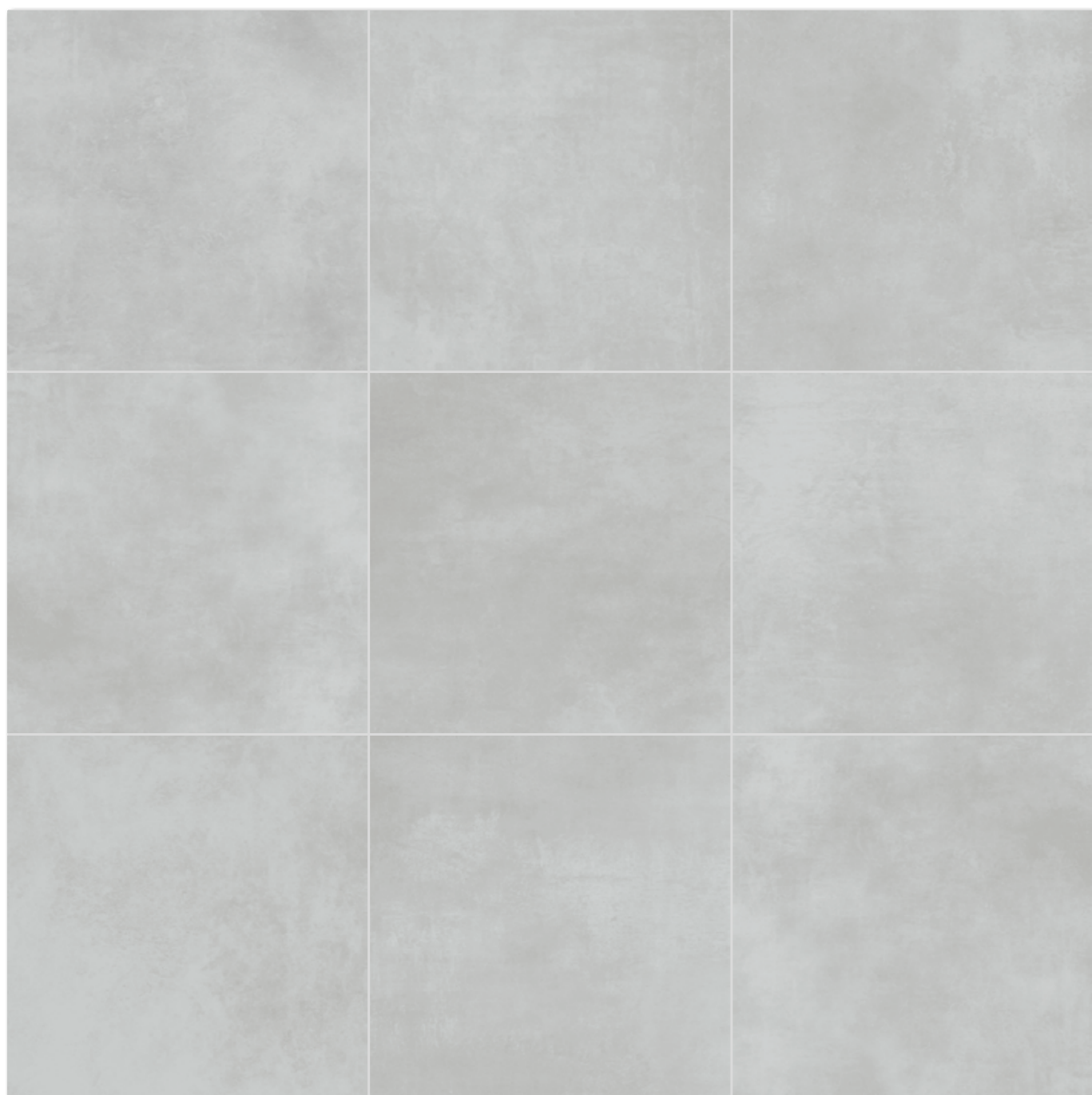
PEI 4  $\varnothing$  76 | m<sup>2</sup>  
mat | matt |  $\text{R10}$  |  $\text{B}$  |  $\text{V3}$

výrobek | product



výrobek   product	cm	mm	EN	ks/m <sup>2</sup>	m <sup>2</sup>	m <sup>3</sup>	kg/m <sup>2</sup>	kg	kg/m <sup>2</sup>	brutto kg	
mozaika set 30x30 cm   mosaic sheet 30x30 cm	5x5	48x48x10	EN 14411 - G Bla	3	11	0,27	-	-	5,9	21,9	-
dlaždice   floor tile	10x10	98x98x10	EN 14411 - G Bla	10	11	0,91	56	50,96	19,9	21,9	1 142
dlaždice   floor tile	20x20	198x198x10	EN 14411 - G Bla	23	25	0,92	57	52,44	20,1	21,9	1 174
dlaždice   floor tile	30x30	298x298x8	EN 14411 - G Bla	13	11	1,18	48	56,64	21,0	17,4	1 011
dlaždice   floor tile	45x45	445x445x8	EN 14411 - G Bla	6	5	1,21	34	41,14	21,1	17,4	741



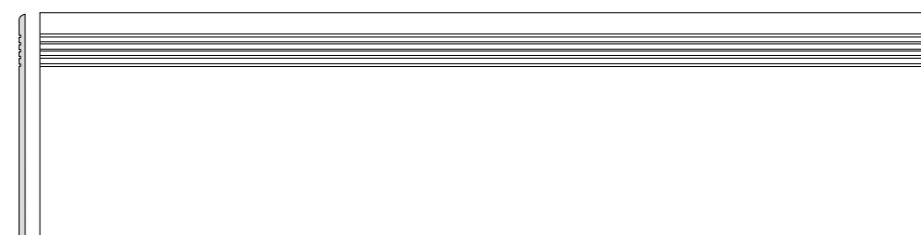


Všechny výrobky celé série vykazují velké odchylky odstínové difference V3. | All products of the entire batch show big deviations in shade difference V3.

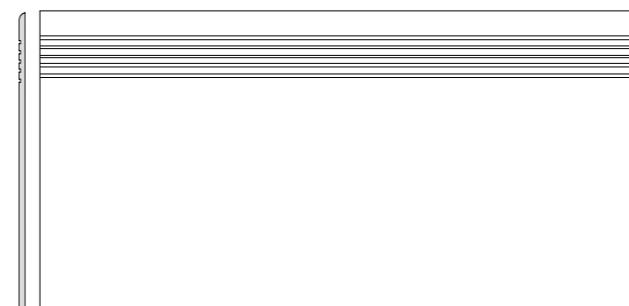
Před pokládkou doporučujeme jednotlivé obkladové prvky vybírat z několika kartonů a výslednou plochu komponovat podle inspirativní fotodokumentace z katalogů RAKO případně z webových stránek www.rako.cz. Žádoucí je kombinace všech jednotlivých designů obkladových prvků včetně jejich natáčení o 90° nebo 180° tak, aby bylo dosaženo vyváženého vzhledu obkládané plochy.

Before laying the tiles, we suggest you selectb from several cartons and arrange them as illustrated in the inspiration photo documentation in RAKO catalogues or website www.rako.eu, and mix the tiles to achieve the required result including turning them by 90° or 180°.

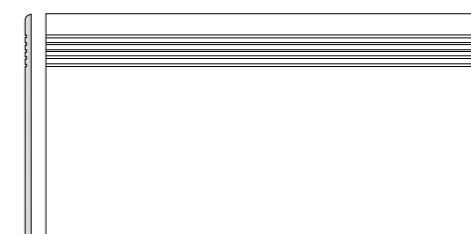
výrobek   product	cm	mm	EN	ks/m <sup>2</sup>	m <sup>2</sup> /ks	kg/m <sup>2</sup>	brutto kg
schodovka   step tile	30x120	298x1198x10	STO č. 030 - 059824	5	2,8	1,80	-
schodovka   step tile	40x80	398x798x10	STO č. 030 - 059824	2	3,1	0,64	-
schodovka   step tile	30x60	298x598x10	STO č. 030 - 059824	6	5,6	1,08	40
sokl   skirting plinth	80x9,5	798x95x10	STO č. 030 - 059824	10	13,2	0,76	-
sokl   skirting plinth	60x9,5	598x95x10	STO č. 030 - 059824	13	17,5	0,74	-
sokl   skirting plinth	45x8,5	445x85x8	STO č. 030 - 059824	25	26,1	0,96	-
schodová tvarovka   special step tile	40x80	398x798x10	STO č. 030 - 059824	2	-	-	-



DCPVF720\* slonová kost | ivory  
 DCPVF721\* hnědošedá | brown-grey  
 DCPVF722\* bílá | white  
 DCPVF723\* světle šedá | light gre  
 DCPVF724\* tmavě šedá | dark grey  
 DCPVF725\* černá | black  
 PEI 4-5 ○ 86 | ks  
 mat | matt



DCP84720 slonová kost | ivory  
 DCP84721 hnědošedá | brown-grey  
 DCP84722 bílá | white  
 DCP84723 světle šedá | light grey  
 DCP84724 tmavě šedá | dark grey  
 DCP84725 černá | black  
 PEI 4-5 ○ 78 | ks  
 mat | matt



DCPSE720 slonová kost | ivory  
 DCPSE721 hnědošedá | brown-grey  
 DCPSE722 bílá | white  
 DCPSE723 světle šedá | light grey  
 DCPSE724 tmavě šedá | dark grey  
 DCPSE725 černá | black  
 PEI 4-5 ○ 72 | ks  
 mat | matt



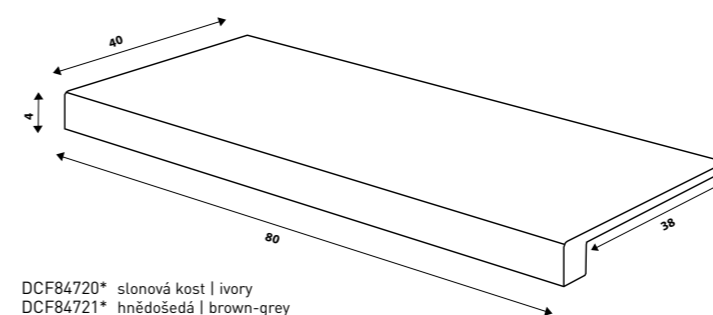
DSA89720 slonová kost | ivory  
 DSA89721 hnědošedá | brown-grey  
 DSA89722 bílá | white  
 DSA89723 světle šedá | light grey  
 DSA89724 tmavě šedá | dark grey  
 DSA89725 černá | black  
 ○ 72 | ks  
 mat | matt



DSAS4720 slonová kost | ivory  
 DSAS4721 hnědošedá | brown-grey  
 DSAS4722 bílá | white  
 DSAS4723 světle šedá | light grey  
 DSAS4724 tmavě šedá | dark grey  
 DSAS4725 černá | black  
 ○ 58 | ks  
 mat | matt



DSAPS720 slonová kost | ivory  
 DSAPS721 hnědošedá | brown-grey  
 DSAPS722 bílá | white  
 DSAPS723 světle šedá | light grey  
 DSAPS724 tmavě šedá | dark grey  
 DSAPS725 černá | black  
 ○ 56 | ks  
 mat | matt



DCF84720\* slonová kost | ivory  
 DCF84721\* hnědošedá | brown-grey  
 DCF84722\* bílá | white  
 DCF84723\* světle šedá | light grey  
 DCF84724\* tmavě šedá | dark grey  
 DCF84725\* černá | black  
 PEI 4-5 ○ 108 | ks  
 mat | matt

\* Výroba na objednávku. | Production by order.



30x120  
R10  
B  
V3  
R

40x80  
30x60  
R10  
B  
V3  
R

80x9,5  
60x9,5  
R

45x8,5  
R

40x80  
R10  
B  
V3  
R